



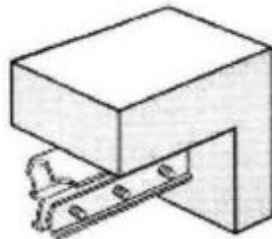
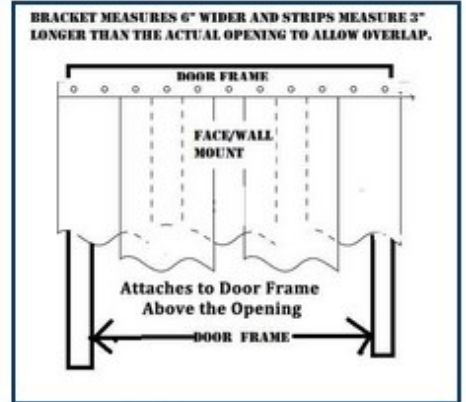
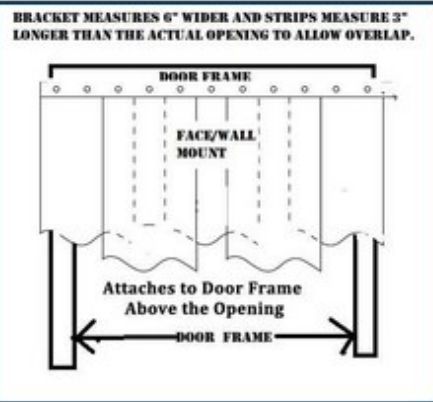
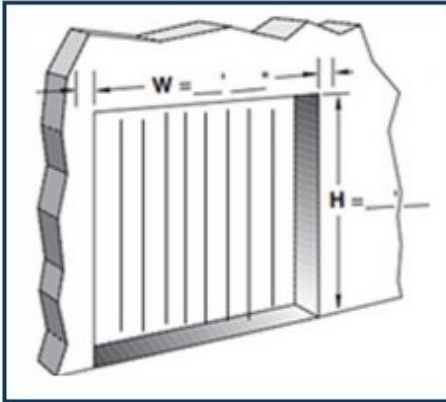
## DFX Vinyl Strip Doors



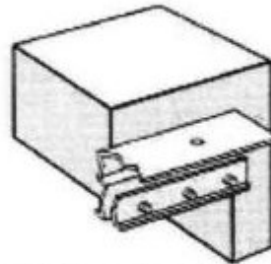
When making a decision about a vinyl strip door there are a number of things to consider. A phone call, email or form submission will bring quick assistance and get the exact best door specified for your application.

|  |  |
|--|--|
| 1. What is the width & height of the opening?  |  |
| 2. What style mounting is required?  |  |
| 3. What type of areas are being divided? (inside to outside, two inside rooms, offices to warehouse, etc.) |  |
| 4. What type of traffic will be parting the curtains? (people, forklifts, conveyor)                        |  |
| 5. What are the temperature? (outside to warehouse space, freezer to warehouse, other)                     |  |
| 6. Any unusual considerations for the traffic thru this door?  |  |

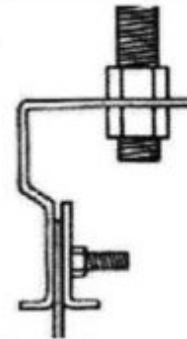
# Mount Types



Header Mount to bottom surface of overhead doorway



Wall Mount to wall surface immediately over doorway



Threaded Rod suspended by clamp & 1/2" rod from overhead beam

## Mounts Three Ways!

### Material Type:

- **Standard Clear:** For use in interior and exterior applications above freezing. 30 degrees (F) to 150 degrees (F)
- **Standard Clear Ribbed:** For use in interior and exterior applications above freezing. More durable than Standard Clear and scratch resistant
- **Low Temp Clear:** For use in interior applications in ranges of -30 degrees (F) to 100 degrees (F)
- **Low Temp Reinforced:** For use in interior applications below 40 degrees (F).
- **Low Temp Clear Ribbed:** For use in interior applications below 40 degrees (F). More durable than Low Temp Clear and scratch resistant
- **Safety Orange:** To outline parts of doors that are unsafe for passage because of nearness to walls, irregular aisles, etc.



[www.dfxstripdoors.com](http://www.dfxstripdoors.com)

(800) 722-9808