



TARRISON

2019

WWW.TARRISON.COM

ISSUE V.1

WORK TABLES



A

Work Tables & Equipment Stands

Work Tables

- Heavy duty stainless steel top
- Galvanized or stainless steel legs and undershelf
- Adjustable bullet feet
- Marine edge tables available as special order – contact your Tarrison representative

Model No. with galvanized legs & undershelf	Model No. with stainless steel legs & undershelf	Size D" x L" x H"	Weight lbs.
WT-2424	SWT-2424	24 x 24 x 35	42
WT-2430	SWT-2430	24 x 30 x 35	48
WT-2436	SWT-2436	24 x 36 x 35	55
WT-2448	SWT-2448	24 x 48 x 35	65
WT-2460	SWT-2460	24 x 60 x 35	80
WT-2472	SWT-2472	24 x 72 x 35	90
WT-2484	SWT-2484	24 x 84 x 35	100
WT-2496	SWT-2496	24 x 96 x 35	105
WT-3018	SWT-3018	30 x 18 x 35	30
WT-3030	SWT-3030	30 x 30 x 35	50
WT-3036	SWT-3036	30 x 36 x 35	57
WT-3048	SWT-3048	30 x 48 x 35	69
WT-3060	SWT-3060	30 x 60 x 35	83
WT-3072	SWT-3072	30 x 72 x 35	95
WT-3084	SWT-3084	30 x 84 x 35	105
WT-3096	SWT-3096	30 x 96 x 35	110
WT-3636	SWT-3636	36 x 36 x 35	65
WT-3648	SWT-3648	36 x 48 x 35	80
WT-3660	SWT-3660	36 x 60 x 35	95
WT-3672	SWT-3672	36 x 72 x 35	110

Also available open base model. Add suffix LB3S., see page 23

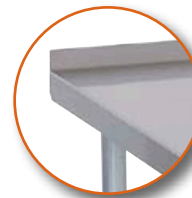
Sizes nominal, detailed specifications available upon request.
Specifications subject to change without notice.



WT-3048



WT-3048LB3S
Open base model



RISER BACK WORK TABLES

With 1.5" rise are available in standard sizes add suffix "R" to model number

Nested Work Tables

- Heavy duty stainless steel top
- Galvanized legs and undershelf
- 3-sided frame
- Adjustable bullet feet
- 5" casters - 2 with brakes on lower table

Model Number	Upper Table D" x L" x H"	Lower Table D" x L" x H"	Weight lbs.
NT-3048-36	30 x 48 x 35	24 x 36 x 32	134
NT-3060-48	30 x 60 x 35	24 x 48 x 32	158
NT-3072-60	30 x 72 x 35	24 x 60 x 32	185
*NT-3084-72	30 x 84 x 35	24 x 36(2) x 32	205
*NT-3096-72	30 x 96 x 35	24 x 36(2) x 32	240

*Comes with two 24" x 36" x 32" High Tables

Sizes nominal, detailed specifications available upon request.
Specifications subject to change without notice.



NT3072-60

30 x 84" = 2520 sq.in.

24" x 72" = 1728 sq.in.

Gain Up to **46%** more work space

Work Tables & Equipment Stands



WT4BS-3048



Open base model



WT4BS-18WS

4" Backsplash Work Tables

- Heavy Duty stainless steel top
- Galvanized or stainless steel legs and undershelf
- Four inch backsplash
- Adjustable bullet feet
- Working height 35" add 4" for overall height

Model No. with galvanized legs & undershelf	Model No. with stainless steel legs & undershelf	Size D" x L" x H"	Weight lbs.
WT4BS-2424	SWT4B-2424	24 x 24 x 35	45
WT4BS-2430	SWT4B-2430	24 x 30 x 35	52
WT4BS-2436	SWT4B-2436	24 x 36 x 35	58
WT4BS-2448	SWT4B-2448	24 x 48 x 35	65
WT4BS-2460	SWT4B-2460	24 x 60 x 35	80
WT4BS-2472	SWT4B-2472	24 x 72 x 35	94
WT4BS-2484	SWT4B-2484	24 x 84 x 35	104
WT4BS-2496	SWT4B-2496	24 x 96 x 35	110
WT4BS-18WS W/5" deep sink	SWT4BS-18WS W/5" deep sink	30 x 18 x 35	48
WT4BS-3018	SWT4B-3018	30 x 18 x 35	35
WT4BS-3030	SWT4B-3030	30 x 30 x 35	50
WT4BS-3036	SWT4B-3036	30 x 36 x 35	57
WT4BS-3048	SWT4B-3048	30 x 48 x 35	69
WT4BS-3060	SWT4B-3060	30 x 60 x 35	83
WT4BS-3072	SWT4B-3072	30 x 72 x 35	95
WT4BS-3084	SWT4B-3084	30 x 84 x 35	105
WT4BS-3096	SWT4B-3096	30 x 96 x 35	110

Also available open base model. Add suffix LB3S., see page 23

Sizes nominal, detailed specifications available upon request. Specifications subject to change without notice.



NT4BS3048-36

Nested Work Tables with 4" backsplash

- Heavy duty stainless steel top
- Galvanized legs and undershelf
- 3-sided frame
- Adjustable bullet feet
- 5" casters - 2 with brakes on lower table
- 4" backsplash

Model Number	Upper Table D" x L" x H"	Lower Table D" x L" x H"	Weight lbs.
NT4BS3048-36	30 x 48 x 35/39	24 x 36 x 32	134
NT4BS3060-48	30 x 60 x 35/39	24 x 48 x 32	158
NT4BS3072-60	30 x 72 x 35/39	24 x 60 x 32	185
*NT4BS3084-72	30 x 84 x 35/39	24 x 36(2) x 32	205
*NT4BS3096-72	30 x 96 x 35/39	24 x 36(2) x 32	240

*Comes with two 24" x 36" x 32" High Tables

Sizes nominal, detailed specifications available upon request. Specifications subject to change without notice.

30 x 84" = 2520 sq.in.
24" x 72" = 1728 sq.in.

Gain Up to **46%** more work space

Work Tables & Equipment Stands



WTCB2424

Corner Work Tables with Backsplash

- Heavy duty stainless steel top
- Galvanized legs and undershelf
- 4" backsplash on two sides
- Adjustable bullet feet

Model Number	Size D" x L" x H"	Weight lbs.
WTCB2424	24 x 24 x 35	45
WTCB3030	30 x 30 x 35	55

Sizes nominal, detailed specifications available upon request.
Specifications subject to change without notice.

Steam Tables

Drop In, Cart Base or Cabinet Base

- Available as drop in and free standing either on Cart base or Cabinet base
- Available in single well design and multi well design up to six wells (cord & plug not included)
- Bath style wells with single control, wet type with drain
- Adapter bars and water inlet included (mixing valve by others)



ST-2-31



See our **Servery Catalogue** for more **Steam and Hot Food Table Solutions**

Drop In	Cart Base	Cabinet Base	Electrical
BM-1	ST-1-18	STCB-1-24	208V ■ 1500W
BM-2	ST-2-31	STCB-2-36	208V ■ 1500W
BM-3	ST-3-45	STCB-3-48	208V ■ 1500W
BM-4	ST-4-59	STCB-4-60	208V ■ 2x1500W
BM-5	ST-5-73	STCB-5-84	208V ■ 2x1500W
BM-6	ST-6-87	STCB-6-96	208V ■ 2x1500W



BM-3

Poly Top Trimming Table

- Heavy duty 18 Gauge stainless steel welded deck
- Poly Top - 3/4" thick, FDA Approved Sanalite
- Stainless steel legs with adjustable bullet feet
- Available with stainless steel undershelf or open base

Model No. with undershelf	Weight lbs.	Model No. (open base)	Weight lbs.	Overall Size D" x L" x H"
PTS-3048	72	PTB-3048	60	30 x 48 x 35
PTS-3060	83	PTB-3060	70	30 x 60 x 35
PTS-3072	92	PTB-3072	80	30 x 72 x 35
PTS-3084	110	PTB-3084	90	30 x 84 x 35
PTS-3096	125	PTB-3096	100	30 x 96 x 35

Sizes nominal, detailed specifications available upon request.
Specifications subject to change without notice.



PTB-3048

Work Tables & Equipment Stands



ES-3048

Heavy-duty equipment stands are durable, strong and designed to provide accurate cooking height.



Shown with Charbroiler by others

ES-3024

Heavy Duty Equipment Stands

- Heavy Duty 16 Gauge stainless steel top
- Galvanized legs and undershelf
- One and one half inch 3-sided riser
- Adjustable bullet feet
- Use one stand per piece of counter equipment

Model Number	Size D" x L" x H"	Weight lbs.
24" DEEP STANDS		
ES-2412	24 x 12.125 x 24	28
ES-2418	24 x 18.125 x 24	36
ES-2424	24 x 24.125 x 24	44
ES-2430	24 x 30.125 x 24	48
ES-2436	24 x 36.125 x 24	52
ES-2448	24 x 48.125 x 24	62
ES-2460	24 x 60.125 x 24	68
ES-2472	24 x 72.125 x 24	85
30" DEEP STANDS		
ES-3012	30 x 12.125 x 24	32
ES-3018	30 x 18.125 x 24	40
ES-3024	30 x 24.125 x 24	48
ES-3030	30 x 30.125 x 24	52
ES-3036	30 x 36.125 x 24	57
ES-3048	30 x 48.125 x 24	69
ES-3060	30 x 60.125 x 24	75
ES-3072	30 x 72.125 x 24	100
*Optional swivel casters, stainless steel legs and shelf available upon request.		
Sizes nominal, detailed specifications available upon request. Specifications subject to change without notice.		



MS2424KD
Shown with mixer by others



UR54

Mixer Stand

- Heavy Duty 16 Gauge stainless steel top
- Galvanized legs and undershelf
- One and one half inch 3-sided riser
- Adjustable bullet feet

Model Number	Size D" x L" x H"	Weight lbs.
HEAVY DUTY MIXER STAND - All Welded		
MS2424HD	24 x 24 x 24	48
MS3030HD	30 x 30 x 24	52
BUDGET DUTY MIXER STAND - Knock Down		
MS-2424KD	24 x 24 x 24	48
MS-3030KD	30 x 30 x 24	52
UR54	54" high utensil rack complete with five utility rods	8
*Optional swivel casters, stainless steel legs and shelf available upon request.		
Sizes nominal, detailed specifications available upon request. Specifications subject to change without notice.		

Hardwood Work Tables

Hardwood Top Work Table

- Hardwood top - 1 3/4" thick
- 34" Chrome Posts with two 24" - 3 sided braces for "B" style or two chrome wire shelves (24" or 30") for "S" style and four Wood Top Joiners

Model No. with undershelves	Weight lbs.	Model No. (open base)	Weight lbs.	Size D" x L" x H"
HTS-2424C	52	HTB-2424C	46	24 x 24 x 35
HTS-2430C	63	HTB-2430C	53	24 x 30 x 35
HTS-2436C	76	HTB-2436C	66	24 x 36 x 35
HTS-2448C	95	HTB-2448C	83	24 x 48 x 35
HTS-2460C	118	HTB-2460C	100	24 x 60 x 35
HTS-2472C	139	HTB-2472C	117	24 x 72 x 35
HTS-3036C	92	HTB-3036C	79	30 x 36 x 35
HTS-3048C	116	HTB-3048C	104	30 x 48 x 35
HTS-3060C	141	HTB-3060C	128	30 x 60 x 35
HTS-3072C	165	HTB-3072C	153	30 x 72 x 35

Optional s/s legs and undershelf also available see page 42

Sizes nominal, detailed specifications available upon request.
Specifications subject to change without notice.



HTB-3048C



HTS-3048C

4" Backsplash Hardwood Work Table

- Hardwood top - 1 3/4" thick
- Four inch stainless steel backsplash riser on 3 sides
- 34" Chrome Posts with two 24" - 3 sided braces for "B" style or two 30" chrome wire shelves for "S" style and four Wood Top Joiners

Model No. with undershelves	Wt. lbs.	Model No. (open base)	Wt. lbs.	Size D" x L" x H"
HT4S-3036C	89	HT4B-3036C	77	30 x 36 x 35/39
HT4S-3048C	114	HT4B-3048C	101	30 x 48 x 35/39
HT4S-3060C	137	HT4B-3060C	125	30 x 60 x 35/39
HT4S-3072C	161	HT4B-3072C	149	30 x 72 x 35/39

24" deep and additional lengths available on special request.
Optional s/s legs and undershelf also available see page 42

Sizes nominal, detailed specifications available upon request.
Specifications subject to change without notice.



HT4B-3048C



HT4S-3048C



**Call your Tarrison rep
for custom applications**

Hardwood Work Tables



HTS-3048G



HTB-3048G



HT4S-3048G



HT4B-3048G

Hardwood Top Work Table

- Hardwood top - 1¾" thick
- Galvanized legs with adjustable bullet feet
- Available with galvanized undershelf or open base

Model No. with undershelf	Weight lbs.	Model No. (open base)	Weight lbs.	Size D" x L" x H"
HTS-2424G	50	HTB-2424G	40	24 x 24 x 35
HTS-2430G	64	HTB-2430G	54	24 x 30 x 35
HTS-2436G	76	HTB-2436G	66	24 x 36 x 35
HTS-2448G	95	HTB-2448G	83	24 x 48 x 35
HTS-2460G	118	HTB-2460G	100	24 x 60 x 35
HTS-2472G	139	HTB-2472G	117	24 x 72 x 35
HTS-2484G	174	HTB-2484G	134	24 x 84 x 35
HTS-2496G	212	HTB-2496G	152	24 x 96 x 35
HTS-3036G	92	HTB-3036G	79	30 x 36 x 35
HTS-3048G	116	HTB-3048G	104	30 x 48 x 35
HTS-3060G	141	HTB-3060G	128	30 x 60 x 35
HTS-3072G	165	HTB-3072G	153	30 x 72 x 35
HTS-3084G	200	HTB-3084G	177	30 x 84 x 35
HTS-3096G	228	HTB-3096G	200	30 x 96 x 35

Optional s/s legs and undershelf also available see page 23

Sizes nominal, detailed specifications available upon request.
Specifications subject to change without notice.

4" Backsplash Hardwood Work Table

- Hardwood top - 1¾" thick
- Four inch stainless steel backsplash riser on 3 sides
- Galvanized legs with adjustable bullet feet
- Available with galvanized undershelf or open base

Model No. with undershelf	Wt. lbs.	Model No. (open base)	Wt. lbs.	Size D" x L" x H"
HT4S-3036G	89	HT4B-3036G	77	30 x 36 x 35/39
HT4S-3048G	114	HT4B-3048G	101	30 x 48 x 35/39
HT4S-3060G	137	HT4B-3060G	125	30 x 60 x 35/39
HT4S-3072G	161	HT4B-3072G	149	30 x 72 x 35/39

24" width and additional lengths available on special request.
Optional s/s legs and undershelf also available see page 23

Sizes nominal, detailed specifications available upon request.
Specifications subject to change without notice.



Stainless Steel Drawer Assembly, see page 23



SSWT-3048

Knife holders and sanitizers available on request



SSCB-3048BD
shown with optional
receptacle box



SSRB-48B
shown with optional
receptacle box

Slicer Stands on Work Table Base

- Heavy duty all welded stainless steel construction
- Reinforced top for automatic slicer use
- Stainless steel under shelf for utility storage
- Add suffix "B" for 4" back splash top
- See Demo Stations for available options

Model No. Flat Top	Model No. Back Splash	Size D" x L" x H"	Weight lbs.
SSWT-3048	SSWT-3048B	30 x 48 x 35	70
SSWT-3060	SSWT-3060B	30 x 60 x 35	85
SSWT-3072	SSWT-3072B	30 x 72 x 35	95
SSWT-3084	SSWT-3084B	30 x 84 x 35	105
SSWT-3096	SSWT-3096B	30 x 96 x 35	110

Sizes nominal, detailed specifications available upon request.
Specifications subject to change without notice.

Slicer Stands on Cabinet Base

- All heavy duty stainless steel cabinet base with 6" back splash
- Reinforced top for automatic slicer use
- Sliding doors to protect storage area
- Adjustable stainless steel intermediate shelf
- Optional pull out drawers available - add suffix "D"
- See page 10 for available options

Model Number	Size D" x L" x H"	Weight lbs.
SSCB-3048B	30 x 48 x 35	200
SSCB-3060B	30 x 60 x 35	230
SSCB-3072B	30 x 72 x 35	245
SSCB-3084B	30 x 84 x 35	275
SSCB-3096B	30 x 96 x 35	310
SSCB-3048BD	30 x 48 x 35	200
SSCB-3060BD	30 x 60 x 35	230
SSCB-3072BD	30 x 72 x 35	250
SSCB-3084BD	30 x 84 x 35	290
SSCB-3096BD	30 x 96 x 35	315

Sizes nominal, detailed specifications available upon request.
Specifications subject to change without notice.

Slicer Stands on Refrigerated Base

- All heavy duty stainless steel refrigerated base with 6" back splash
- Reinforced top for automatic slicer use
- Rear mount compressor for maximum product facings
- Adjustable intermediate shelves

Model Number	Size D" x L" x H"	Weight lbs.
SSRB-48B	31.5 x 48 x 35	310
SSRB-60B	31.5 x 60 x 35	320
SSRB-72B	31.5 x 72 x 35	355
SSRB-84B	31.5 x 84 x 35	510
SSRB-96B	31.5 x 96 x 35	620

Sizes nominal, detailed specifications available upon request.
Specifications subject to change without notice.

Wall Shelves & Overshelves



Work Table Overshelves

- Heavy duty 18 Gauge stainless steel shelf tops
- Mounting brackets and clips supplied
- Mounting and/or assembly required

Model No.	Size D" x L" x H"	Weight lbs.
SINGLE OVERSHELF - 24" DEEP		
SOS2436	24 x 36 x 18	22
SOS2448	24 x 48 x 18	26
SOS2460	24 x 60 x 18	34
SOS2472	24 x 72 x 18	40
SOS2484	24 x 84 x 18	44
SOS2496	24 x 96 x 18	48
DOUBLE OVERSHELF - 24" DEEP		
DOS2436	24 x 36 x 30	38
DOS2448	24 x 48 x 30	50
DOS2460	24 x 60 x 30	64
DOS2472	24 x 72 x 30	76
DOS2484	24 x 84 x 30	86
DOS2496	24 x 96 x 30	96

Sizes nominal, detailed specifications available upon request.
Specifications subject to change without notice.

Model No.	Size D" x L" x H"	Weight lbs.
SINGLE OVERSHELF - 12" DEEP		
SOS1236	12 x 36 x 18	14.0
SOS1248	12 x 48 x 18	16.0
SOS1260	12 x 60 x 18	20.0
SOS1272	12 x 72 x 18	24.0
SOS1284	12 x 84 x 18	28.0
SOS1296	12 x 96 x 18	32.0
DOUBLE OVERSHELF - 12" DEEP		
DOS1236	12 x 36 x 30	28.0
DOS1248	12 x 48 x 30	32.0
DOS1260	12 x 60 x 30	40.0
DOS1272	12 x 72 x 30	48.0
DOS1284	12 x 84 x 30	56.0
DOS1296	12 x 96 x 30	64.0
SINGLE OVERSHELF - 15" DEEP		
SOS1536	15 x 36 x 18	16.0
SOS1548	15 x 48 x 18	18.0
SOS1560	15 x 60 x 18	22.0
SOS1572	15 x 72 x 18	26.0
SOS1584	15 x 84 x 18	30.0
SOS1596	15 x 96 x 18	36.0
DOUBLE OVERSHELF - 15" DEEP		
DOS1536	15 x 36 x 30	30.0
DOS1548	15 x 48 x 30	38.0
DOS1560	15 x 60 x 30	50.0
DOS1572	15 x 72 x 30	58.0
DOS1584	15 x 84 x 30	66.0
DOS1596	15 x 96 x 30	76.0
SINGLE OVERSHELF - 18" DEEP		
SOS1836	18 x 36 x 18	20.0
SOS1848	18 x 48 x 18	24.0
SOS1860	18 x 60 x 18	30.0
SOS1872	18 x 72 x 18	36.0
SOS1884	18 x 84 x 18	40.0
SOS1896	18 x 96 x 18	44.0
DOUBLE OVERSHELF - 18" DEEP		
DOS1836	18 x 36 x 30	34.0
DOS1848	18 x 48 x 30	46.0
DOS1860	18 x 60 x 30	60.0
DOS1872	18 x 72 x 30	70.0
DOS1884	18 x 84 x 30	80.0
DOS1896	18 x 96 x 30	90.0

Sizes nominal, detailed specifications available upon request.
Specifications subject to change without notice.

Adapter Bars

- Use to conveniently divide fractional size pans
- Heavy duty stainless steel construction
- Custom sizes on request

Model No.	Overall Size D" x L"	Weight lbs.
AB12	7/8" x 12"	1
AB20	7/8" x 20"	1

Sizes nominal, detailed specifications available upon request.
Specifications subject to change without notice.



Stainless Steel Corner Guards and Back Wall Stainless Steel Sheets

- Use stainless steel guards to protect corners
- Custom sizes available
- Use stainless steel back wall for easy cleaning and to protect wall surfaces behind cook lines and other areas

Model No.	Overall Size D" x L" x H"	Weight lbs.
CG48	2 x 2 x 48	2
BW48120	48 x 120 - 20 ga.	70

Sizes nominal, detailed specifications available upon request.
Specifications subject to change without notice.



Pass Through

- Connects the 'back of the house' to the 'front of the house'
- All stainless steel construction
- Available in any depth, length and height configuration

Model No.	Size
TF-PT	any depth, length and height

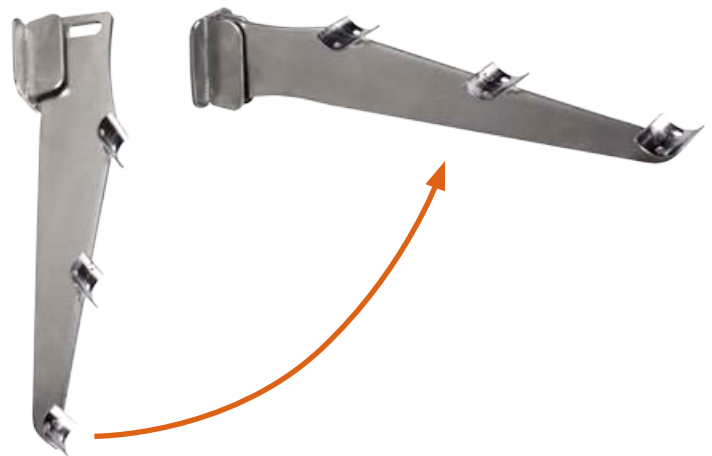


Tray Rail Brackets

- Drop down style bracket for tubular tray rails
- All stainless steel construction

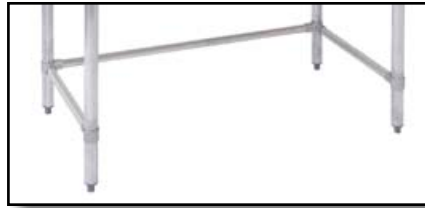
Model No.	Overall Size L" x H"	Weight lbs.
DDB	2.5" x 12"	2

Sizes nominal, detailed specifications available upon request.
Specifications subject to change without notice.





Stainless Steel Undershef for Worktable



3-Sided Brace for Worktable or Sink



Galvanized Undershef for Worktable



Speed Rail



Stainless Steel Drawer Assembly



Tray Slides



1" Post Casters



Wood Top Brace



Work Table Casters for galvanized legs



PRB2020



Removable Drainboard

Accessories

Description	Model No.	Model No.	Model No.	Model No.
Galvanized Undershef for Work Tables (24" wide)	US2436G	US2448G	US2460G	US2472G
Galvanized Undershef for Work Tables (30" wide)	US3036G	US3048G	US3060G	US3072G
Stainless Undershef for Work Tables (24" wide)	US2436S	US2448S	US2460S	US2472S
Stainless Undershef for Work Tables (30" wide)	US3036S	US3048S	US3060S	US3072S
Stainless Leg (not shown) each	SSLEG			
Speed Rail - 4"x6"x22", 4"x6"x32", 4"x6"x42"	SR22	SR32	SR42	
Pre-rinse perforated tray for Soil Dish Table	PRB2020			
1" Post Caster - Swivel	C5SPS			
1" Post Caster - Swivel/Brake	C5SPB			
Wood Top Brace	WTB			
Leg Brace (3 sided) Galvanized for sinks or worktables	LB3S*	*Specify sink or worktable size when ordering		
Leg Brace (3 sided) Stainless Steel for sinks or worktables	LB3SS*	*Specify sink or worktable size when ordering		
Removable Drain Board	RDB*	*Specify sink model number, left or right when ordering		
5" Swivel Caster for Worktable/ with brake	CM5B			
5" Swivel Caster for Worktable /without brake	CM5			
PolySeal - 18" & 24" Tray Slide Inserts	TS18Z	TS24Z		
Stainless Steel Drawer Assembly 24" D x 19.5" L x 7" H	WCD	Additional charge for installation when ordered with table		



www.TARRISON.com
2019

CANADIAN HEAD OFFICE

2780 Coventry Road, Oakville,
ON L6H 6R1
CANADA

US DISTRIBUTION CENTER

150 Gratiot Blvd. Marysville,
MI 48040
USA

Tel. 905-825-9665
info@tarrison.com

